

Figura 1: (a) Q1 quality (too early), (b) Q2 quality (normal), (c) Q3 quality (too late).

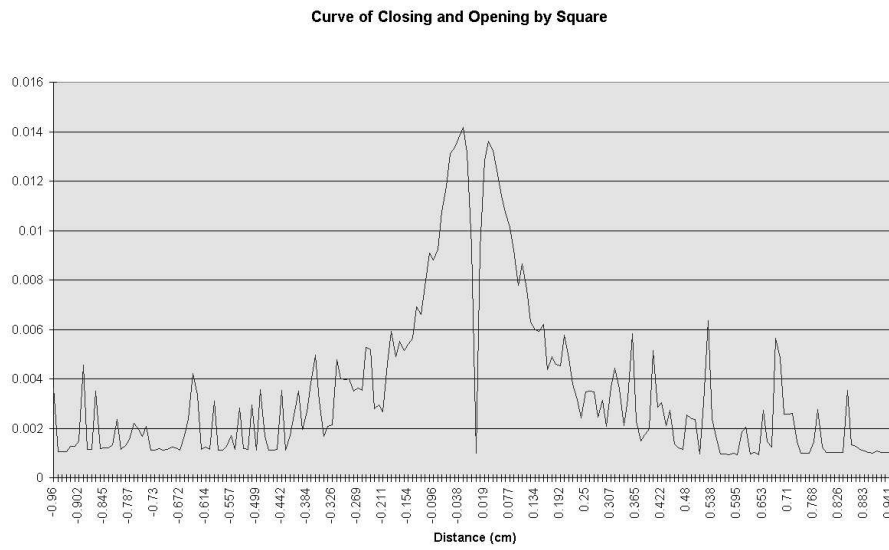


Figura 2: Example of a closing (left side) and opening (right side) curves by squares.

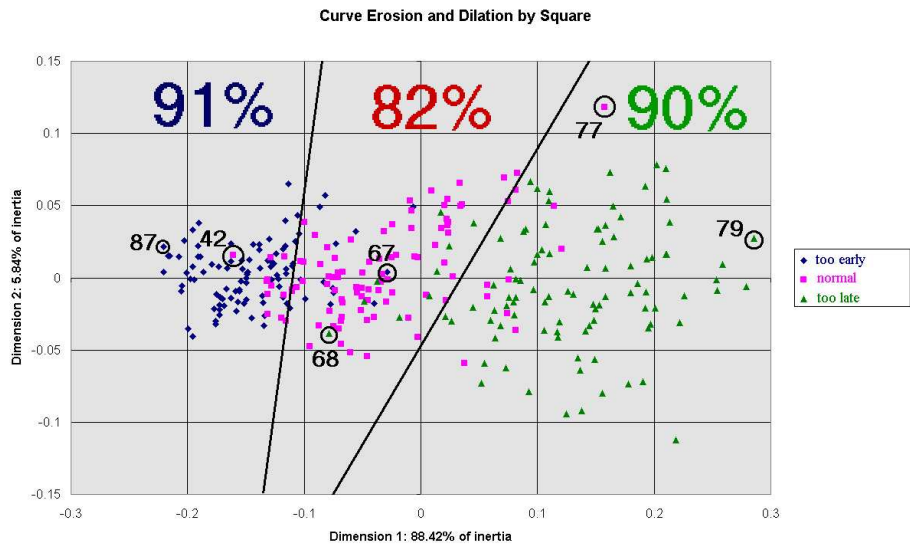


Figure 3: Classification score for erosion-dilatation curves by square and related representation of variables in the first factor plane

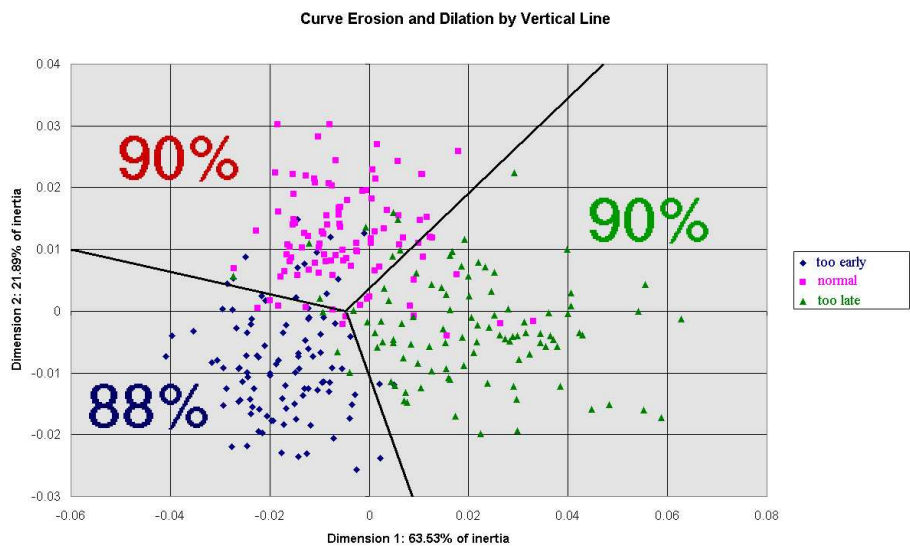


Figure 4: Classification score for erosion-dilatation curves by vertical lines and related representation of variables in the first factor plane